



## Longdon Neighbourhood Plan Information Statement

A Referendum relating to the Longdon Neighbourhood Plan will be held on 5 September 2018.

The question which will be asked in the Referendum will be:

**'Do you want Lichfield District Council to use the Neighbourhood Plan for Longdon to help it decide planning applications in the neighbourhood area?'**

The Referendum area is identified on the map which is included with this statement. The Referendum area is identical to the area which has been designated as the Longdon Neighbourhood Plan area.

A person is entitled to vote in the Referendum if on 5<sup>th</sup> September 2018:

- (a) He or she is entitled to vote in a local government election of any Councillor in the Referendum area; and
- (b) his or her qualifying address for the election is in the Referendum area. A persons qualifying address is, in relation to a person registered in the register of electors, the address in respect of which he or she is entitled to be registered.

The Referendum expenses limit that will apply in relation to the Referendum is £2439.82. The number of persons entitled to vote in the Referendum by reference to which that limit has been calculated is 1319.

The Referendum will be conducted in accordance with procedures which are similar to those used at local government elections.

A copy of specified documents (those listed below) may be inspected at:

- Lichfield District Council, District Council House, Frog Lane, Lichfield, WS13 6YY. Opening hours: 8.45am to 5.15pm - Monday to Friday. For more information, call 01543 308148 or email [developmentplans@lichfielddc.gov.uk](mailto:developmentplans@lichfielddc.gov.uk)

The documents are also available for public viewing on the District Council's website at:

<https://www.lichfielddc.gov.uk/Council/Planning/The-local-plan-and-planning-policy/Neighbourhood-plans/Longdon-neighbourhood-plan.aspx>

### **The specified documents are:**

- The draft Longdon Neighbourhood Plan incorporating the modifications set out in the Decision Statement;
- The Report of the independent Examiner into the Neighbourhood Plan;
- A Summary of the representations submitted to the independent examiner;
- A Decision Statement by the Local Planning Authority that the draft Neighbourhood Plan with modifications meets the basic conditions specified by statute and complies with the

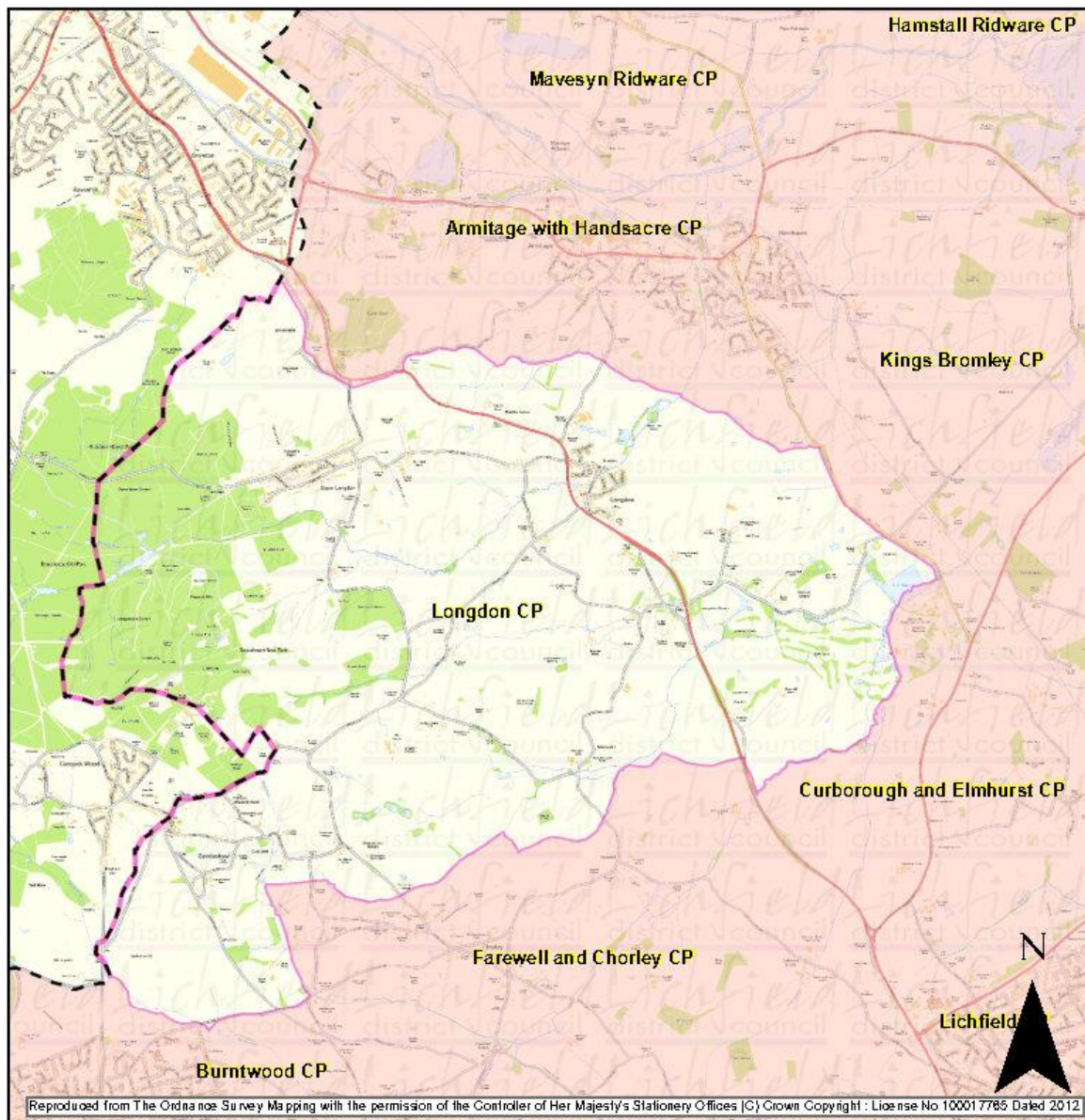
provision made by or under sections 38A and 38B of the Planning and Compulsory Purchase Act 2004;

- A statement that sets out general information about town and country planning (including neighbourhood planning) and the referendum; and
- Map of the Longdon Neighbourhood Plan Area.

Should you have any queries regarding the Neighbourhood Plan or the Neighbourhood Plan process please call 01543 308192.

If you require further information on the election, or registering to vote please call 01543 308125.

## Longdon Parish



### Key

-  Lichfield District Boundary
-  Longdon Parish

Map supplied by Lichfield District Council

**Lichfield**  
district council  
[www.lichfielddc.gov.uk](http://www.lichfielddc.gov.uk)