



Welcome to the Spring / Summer 2019 edition of Longdon Life,  
covering Longdon, Upper Longdon, Longdon Green and Gentleshaw



## **Inside this issue:**

**An Impression of Longdon—article by Gareth Evans**

**Club reports from around the Parish**

**Details of village events, fund-raising for clubs  
and charity events**

**Information about the Best Kept Village competition**

---

The articles and comments published in Longdon Life do not necessarily represent the views of the Parish Council. The decision to print or not to print articles is entirely at the discretion of the Parish Council.

Published by Longdon Parish Council email [longdonpc@outlook.com](mailto:longdonpc@outlook.com)

The Parish Council do not endorse any advertisement but encourage parishioners to support local business.

Editorial and advertising contact Glenys Beveridge email – [longdonlife.editor@gmail.com](mailto:longdonlife.editor@gmail.com)



**Community**



**Communication**



**Cohesion**

**From Cllr Gina Duckett, Chair Longdon**

**Parish Council**

The Parish Council should be the centre of the **community** and we are aware that a **community** is built on **communication**. We hold our Council meetings every month on the second Tuesday, except for August and December, which are open to all to attend and a time is set aside at each meeting for members of the public to address the Council on anything that may be of concern. A list of all Councillors and their contact details are on all notice boards and our website where we also publish all our information and **communicate** details of organisations, useful local contacts etc so please make use of it if you can.

Our Parish **community** has many organisations of which we can be proud, they offer varied activities and interests. Many of these have been around through the efforts of their members for a number of years however, what has been made clear is that all would benefit from new members and that is where **communication** comes in.

Longdon Life which is produced by the Parish Council twice a year is an excellent vehicle for **communicating** the events and contact details of each organisation and so I urge all organisations and groups inside the Parish to use it as a tool for spreading your message and gaining new members. The Parish Council has produced and displayed on notice boards in Longdon, Longdon Green, Upper Longdon and Gentleshaw a list of the organisations within the Parish together with contact details to **communicate** the information to anyone interested. If your organisation is not on the list, let the Clerk know and we will add it on.

In an era of digital technology, it would be difficult to avoid emails and when trying to **communicate** with as wide an audience as possible why would you? If each organisation held the email address of all the others and sent one email to all, advertising their forthcoming event or joining details requesting the recipient to pass the email on to all their members, one email could potentially **communicate** with hundreds of people. One email copied in to all other organisations advising of an event could avoid events clashing and swell the numbers in attendance. We at the Parish Council will be doing the same.

The Lichfield Mercury has a weekly village page and many local villages use it to **communicate** with the wider public. The Mercury only wants a few sentences. **Communication** will bring us all together to achieve the **cohesion** that makes our Parish special to live in.

If the above seems familiar to you then it may come as no surprise to learn that it was the first article I wrote as becoming Chair in 2017, with minor amendments, the content as my final article before leaving as Chair in 2019 is as relevant now as it was then.



## The Chetwynd Arms

**Upper Way, Upper Longdon 01543 490266**

We are a local family run business serving a wide range of drinks including well-kept real ales, which contain our regular guest ales as well as a fantastic selection of wine.



We are a country pub serving proper pub food, locally sourced and beautifully prepared and served in our restaurant or in the bar.

**Bar Open every day from noon until late**

**FOOD SERVED Wednesday to Saturday noon – 9pm and Sunday from noon until 5pm**

Our Sunday lunches are often fully booked so reservations advised.

Restaurant table booking recommended for popular times and occasions

**Walk-in diners welcomed in the restaurant or bar. Dog friendly too.**

### Summer entertainment

**Sat 18th May Mikey Gormley live music inside the pub 9pm-11pm ALL WELCOME**

*Private Events in the Garden & Marquee*

*Sat 22nd June Private wedding in beer*

*garden Live music 6pm-11pm in marquee*

*Sun 23th June Private birthday party with live music 2pm-9pm in marquee*

*Sat 29th June Private wedding anniversary party in marquee live music 6pm-11pm*

**Sat 3<sup>rd</sup> August Fundraiser for Longdon cricketers and fishermen  
Live music and BBQ 6pm-11pm  
£5 TICKET ALL WELCOME**

*Fri 9th August Private birthday function with live music in the marquee 6pm-11pm*

**Sat 19th October Champions race day with meal inside event**

**Ticket entry to include**

**3 course set menu  
£22pp**

**11.30am arrival,  
Carriages at 6pm**



Tickets almost sold out

(A 2<sup>nd</sup> Race Day event will be on Boxing Day)



**Sat 13<sup>th</sup> July Charity fund raiser for mental health awareness  
6pm-11pm  
BBQ and music  
ALL WELCOME**

For further information or to reserve tickets please telephone 01543 490266

## ANTENATAL YOGA

with other mums -to -be

At Longdon Village hall

Baby News!



*Since the last issue of Longdon Life we  
welcome*

*George, Sienna, George Graham*

*Ivy Rose, Gilbert, Alfie, Josophia  
Florence, Freddie Stephen, Alex and  
Arthur George*

*(According to demand!)*

**CLASSES ARE ON-GOING**

**Thursdays 7.0-8.30pm**

Enquiries: [valpassey@yahoo.com](mailto:valpassey@yahoo.com)

07737272085

*Join any time. Pre-booking necessary*

## New Mother and Baby Yoga Courses

*At Longdon Village Hall have been taking place since the ladies attending prenatal yoga classes persuaded Val to offer this new class. A pilot class was run in November and three courses have subsequently taken place. Val says it is really lovely to meet the babies. Mums can start after their post natal check ups and come until baby crawls too much!! (6-8 months) Post natal exercises and yoga for mum, fun yoga stretches for baby to nursery rhymes. Refreshments.*

*(You do not need to have previously attended the pre natal yoga sessions. All welcome)*

*Three week courses are on  
Thursdays 1.45pm -2.45 pm  
£18*

*Dates: May 2nd, 9th, 16<sup>th</sup>*

*Further dates to be confirmed.  
To book text 07737272085*



The ladies and babies from the Antenatal yoga class who asked Val to start the Mother and Baby Yoga Group at Longdon Village Hall



## **Jam Club** At St James Church, Longdon

For mums, dads, carers, babies and tots to share their new interest and have time  
Together 2pm-3.30pm every Monday in term time  
A warm welcome to new and expectant mums.  
Come along for mutual support  
Tea and Toys, Singing and Rhymes  
Craft activities too.  
For further details contact Pam Cherry 490194

## **Longdon Walking Group**

The Walking Group has now been going for four years and has been very successful.

We have found some interesting places to walk and new friendships have been formed as a result of our walks.



Why not come and join us, you would be made most welcome. We walk every other Tuesday at 10.30 a.m. Meet at the Swan with Two Necks car park (by kind permission of the Landlord).

Walks are fairly easy and usually last around 90 mins to 120 mins and are either local or car share to surrounding local areas.

For more information please contact:  
Irene 490135 or Lynn 490847.

## **Lawn 'n' Order** **' You grow, We mow'**

Retired businessman continuing my new venture offering friendly, dependable and trustworthy garden maintenance.



Services include: - Lawn cutting/edging, weeding, hedge/  
shrub trimming, leaf collection

Please call Keith on **01543 491194** or **07823 387949**

JUST FOR FUN – Name a novel starting with every letter of your name



## St James The Great, Longdon

Our granddaughter Rosalie is almost 8 months old now, and she seems to change every day. As she and her parents live in Salisbury John and I don't get to see her as often as we would like, although modern technology helps as we frequently skype. As I write this article Rosie and her mommy are staying with us for the week, and it has already become apparent how much they both enjoy Eric Carle's book, "The Very Hungry Caterpillar".

It was a favourite with Elisabeth when she was a baby, and it is as much loved by Rosie now. We can read the book over and over again, counting the various items of fruit that are eaten on each day. Looking at the caterpillar as he gets bigger the more he eats, until finally his lovely bright colours vanish as he encloses himself in a dull brown cocoon.

Inevitable, the caterpillar transforms into a gorgeous butterfly, whose wings are patterned with all the food he has previously eaten! In the book all the action takes place over the space of a few days, although in reality changing from a caterpillar into a butterfly can take weeks, and during the cocoon period the creature looks dead. But of course, this isn't the case. Eventually the chrysalis will begin to twist and turn violently and suddenly split open. A beautiful butterfly will emerge. After that it will stand for hours gently moving its wings, pumping fluids into them to extend them fully. Then the butterfly will soar gracefully away on the breezes of summer, leaving nothing behind but a broken chrysalis to indicate its former bondage.



The chrysalis and butterfly suggest the empty grave clothes of our risen Lord. When Peter and John heard the news that the Lord's body was gone from the garden tomb, they ran all the way from their lodging. Peter entered the tomb and "he saw the strips of linen lying there, as well as the burial cloth that had been around Jesus' head. The cloth was folded up by itself, separate from the linen" (John 20:6-7, NIV). The grave clothes once wrapped continuously around the body now lay collapsed, mute testimony that the corpse they had once shrouded had now emerged in life. The bondage of death is broken. Christ is risen!

As we journey towards Easter Day we believe that we can face every day with the assurance that Jesus is in fact alive to help us, to guide us, to give us hope for the future. And since He is living, we can know His love in our lives. The broken chrysalis of His grave clothes proclaims that Christ is Victor even over death. Because He lives, nothing is impossible. Please do join us during Holy Week and Easter as we celebrate Christ's bursting from the tomb.

**Information about Services will be advertised on the church notice board and around the village**

God bless you all, Jan

Revd Janet Waterfield	01543 410751	<a href="mailto:janwaterfield@blueyonder.co.uk">janwaterfield@blueyonder.co.uk</a>
Revd Emma Cooksey	01543 322741	<a href="mailto:emma.cooksey@sky.com">emma.cooksey@sky.com</a>



## Plant Sale

Sat 18th May 2pm **Refreshments available**  
Longdon Village Hall

joint fund raiser for St Giles Hospice and  
St James Church

Donations of Plants and cuttings welcome. Contact

Thurs 9th May  
Flower Arranging  
Demonstration  
and Afternoon Tea  
with Diana Gudgeon  
2.30pm  
In St James Church  
Tickets £7.50  
Tel 492662



Wed 8th May  
10.30 until 12.00  
**Coffee Morning**

by invitation of  
Val and Graham Passey

27, Upper Way, Upper Longdon  
WS151QB

Bring and buy table and raffle.  
Entrance £2



at  
LONGDON CRICKET CLUB &  
WISHING WELL ANGLERS ASSOCIATION

## Hooked on Cricket Annual Fundraiser

Following on from the success of last year, once again the  
Fishing Club and Cricket Club will be hosting their summer  
fundraiser on

**Saturday 3rd August**  
**the Chetwynd Arms,**  
**Upper Longdon.**

The event will start at 6.30pm and see two local bands take to the stage.

**Local village band The Roadsters**

will be supporting Murder of Crows who are a light rock party band.

BBQ and raffle with all monies raised supporting both local village clubs.  
Please do come along for what will surely be another successful event.

Tickets are priced at £5 and can be purchased from  
The Chet or from Jez Johnson or Tom Bonser.

## An impression of Longdon as painted by the Reverend Petit and his sisters

In 1855 the Reverend Petit built a great hall on top of what he called Longdon Ridge, which we now know as Upper Way in Upper Longdon. Petit, when not touring the UK and further afield, researching and giving talks on church architecture, would split his time between the hall, which he called Bumblekyte, and his house in Lichfield, Redcourt, on Tamworth Street. Bumblekyte became the Brambles and then Longdon Grange, and was pulled down in 1969 to make way for the modern Grange cul-de-sac, and Redcourt was demolished in 1929 (to make way for a GP practice, which has since been demolished to make way for a car park). Petit died in 1868 and when the last of his sisters died in 1897 the properties were both sold and the remaining family moved out of Staffordshire.

Over time the Petit's connection to the area was mostly forgotten. Things began to change in the 1990's when members of the family decided to sell most of a huge collection of paintings and drawings made by the Reverend Petit and his sisters. Large, jumbled, uncatalogued batches of pictures were sold at auction, and as Petit and his sisters rarely signed their paintings their attribution was unclear, and unfinished sketches were mixed in with the more finished works. This was not the best way to launch an unknown artistic talent to the world. After a few years though, the paintings and drawings of Reverend Petit in particular began to be recognised as the work of a significant artist, though he is still far from widely known.

In his lifetime, Petit was a well-respected and sought after speaker on church architecture. His drawings and paintings were not commissioned works, he was not a commercial artist, but he painted and drew to accompany the talks that he gave, and books and articles that he wrote. He also painted for pleasure, constantly it would seem, given the volume of work he produced! Because he was not a commercial artist his work over his life adopts a wide variety of styles and he experimented a great deal, but, due to his love of sketching in water colours on location, and capturing what he saw, as he saw it (and not some idealised view), his style is closest to that of the Impressionists.

### Petit's time in Longdon

In 1855, when Petit built his great hall, Upper Longdon was quite sparsely populated and, particularly on his large piece of land, overgrown and wild. The Chetwynd Arms, and The Gate public houses were open, Beaudesert Hall lay on top of the opposite hillside, Russell Bank farm was along the road, and there were several small cottages and farm buildings along the lanes of Upper and Lower Way, but mostly it was open countryside with unlit dirt roads and country lanes. Petit would regularly go on long walks around the area, sketching as he went, often accompanied by his sisters.



The view from Upper Way of the surrounding counties and of the distant spires of Lichfield Cathedral was obviously a major attraction for Petit in building his hall in Upper Longdon and views of the Cathedral often feature in his Longdon sketches. In this picture, I believe we see a lady walking down Shaver's Lane with the three spires just visible on the horizon line, and, possibly, the chimney of a pre-whitewashed Gunpowder cottage down to the lower left.

Although Petit rarely signed his work, most of his paintings that can be identified as images of Longdon, have 'From Bumble' or



‘By Bumble’ or some other reference to Bumblekyte Hall, which means we can place most of them in the areas surrounding the Grange Cul-de-sac.

I believe this painting (far right) shows a view from half way down Grange Hill, the large building in the middle, being the Gate Inn, which stood at the bottom of the hill until the early 1980's, and the high walls on the right being the brick boundary wall of the Grange/Bumblekyte estate which still exist today (although they are mostly obscured by plants).

As already mentioned, Petit's sisters would regularly accompany him on his sketching trips and were prolific amateur artists, sketching in water colours in the same fashion as their brother. After his death, they kept the Hall in Upper Longdon as their second home and continued to sketch and paint in the area. Whilst none of the sisters was quite the artistic equal of their brother, Elizabeth Haig (nee. Petit), had her own unique style, which was similarly impressionistic

In this painting by Elizabeth, titled ‘Turkeys at Brambles’, it seems likely that we are looking at the top of Grange Hill. The space on the right where there



is a small pond is where we now find the Parish Council Notice Board. There was a pond here for many years, as seen on Ordnance Survey maps of the area. The ‘turkeys’ possibly belonged to the sisters, who also kept and bred peacocks and peahens on the estate at the time.

Although the majority of the Petit's paintings in the area are of Upper Longdon, one has come to light from the Brook End side of the village and, naturally, it is of the village's most iconic building, St. James' Church, painted by the Reverend Petit, from what looks to be the old main road, linking Brook End to Longdon Green (Church Hollow). It's a beautiful image of the

church in warm autumn twilight, captured in delicate, economical brushstrokes. It was painted in October 1866.

Two years later, the Reverend Petit caught a chill on a similar painting excursion and, sadly, died in his bed in Lichfield.

A new book on Petit, ‘Petit's Tour of Old Staffordshire’ by Philip Modiano of the Petit Society (<http://www.revpetit.com/>), focusing especially on his art from Staffordshire, written in the form of a selection of tour guides around areas he painted, is out now. The book can be ordered direct from <http://www.ypdbooks.com/travel-and-adventure/1921-petit-s-tours-of-old-staffordshire-YPD02100.html>

Images 1, 2, Courtesy of the Wojtek Szatkowski <http://www.stanfieldandturner.com>

Image 3 Courtesy of Foxhill Antiques <https://www.ebay.co.uk/usr/foxhillantiquescom>

Image 4 – P.O. Evans Private Collection

Gareth can be contacted at: [Bumblekyteandbeyond@gmail.com](mailto:Bumblekyteandbeyond@gmail.com)



## Longdon Village Hall

Many people have commented on how 'bright' and welcoming the Village Hall is these days.

The village-wide power cut last autumn, when the Church was enjoying its Harvest Supper in the hall, prompted us to have our electrics checked out. What started out as the replacement of some of the emergency exit signs, turned out to be almost a re-wire. Changes

to Building Regulations since the hall was refurbished in 2004, meant that quite a lot of replacement work was necessary. However, with the works completed and new energy saving lights both inside and out, we hope to be set fair for another 15 years.



Over the years, parents of young children have generously donated toys that their little ones have outgrown. Toys left at the Hall have always been graciously accepted, but with storage space at a premium inside the building (and outside in the storage sheds), together with health and safety requirements applying to Pre School equipment, some of the gifts have had to be disposed of. Your generosity is much appreciated, but it would be helpful if Pre School was contacted before leaving toys etc.

Whilst on the matter of things left in the hall, at the end of July we are having a tidy. Therefore, if anyone has inadvertently left coats, umbrellas, bags or relatives etc. in the hall, would you please collect them beforehand, otherwise they will be 'permanently tidied.'

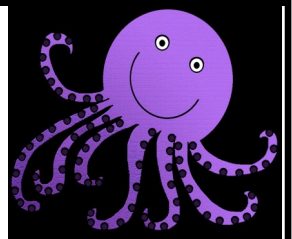
Finally, we have fully revised our web site with new contact details and terms for hiring. So, if you are thinking of a venue for a family bash, or want to join one of the clubs that meet regularly in the hall, have a look at the web site - [www.longdonvillagehall.co.uk](http://www.longdonvillagehall.co.uk).

And finally, finally, our continued thanks to you for your continued support, for without it (and the income it generates) we would not be able to invest in the building's fabric, or its future.

Enjoy the summer.

Neil Vyse, Chairman LVHMC

**DID YOU KNOW** that octopus have blue blood and 3 hearts? The systemic heart circulates blood round the body, the two other branchial hearts pump the blood through each of its two gills.







## HOME VISIT PHYSIOTHERAPY

**For ALL your physiotherapy needs, including:**

- **Post-Operative Rehabilitation**
- **Neurological Rehabilitation, for conditions such as Stroke**
- **Improving mobility and fitness**
- **Relief from Musculoskeletal injuries, such as back and neck pain**



hpcp  
registered  
www.hpcp-uk.org



**T: 07884 281623**

**E: [enquiries@threespiresphysiotherapy.co.uk](mailto:enquiries@threespiresphysiotherapy.co.uk)**  
**[www.threespiresphysiotherapy.co.uk](http://www.threespiresphysiotherapy.co.uk)**



Future Messy Church sessions will not be on the 3rd Saturday so watch the notice boards for news of days and times.



### Letter from the editor



I am so happy to welcome aboard Longdon Life Magazine, Sue, who is helping to put the magazine into a different format. With this input from Sue and continuing help from Val Passey, who works on the Village Planner and my trusty band of special correspondents and feature writers we should find things quicker and much easier to do. If you would like to join in with some different and interesting snippets or features, please get in touch.

I met a good Samaritan today. My shop bill came to £12.10 and in my coin purse I only had a bottle top (don't ask!). The next customer simply leant forward and gave the assistant the 10p. I thanked him and said I would repay his kindness forward. As my change of £8 was given over I looked and in my hand was £13, as I handed back the extra £5, the assistant thanked me for my honesty. I came away thinking that one 10pence coin of kindness turned into fifty 10pence coins of honesty in a matter of seconds. Just goes to show that no act of kindness is ever too small.

### **Longdon W.I. President's Annual Report for March 2018-March 2019.**



The WI in Longdon village continues to meet on the first Wednesday evening of each month in the WI hall, Ford Lane. At the AGM in March 2018, Minna Andrews was elected President for a second year, with a supporting team of seven ladies willing to form the committee.

From a membership of approximately 30, the average attendance at meetings over the year has been 24. There have been contrasting topics each month and these have been appreciated by both members and visitors.

The June Open Gardens weekend in the village was very successful and some WI members spent time to design and create a set-piece in St. James' Church to represent the WI.

Several members enjoyed the annual garden meeting in August, which took place at the home and costume museum of antiques' collector and enthusiast Notty Hornblower in Alstonefield. It was fascinating to see some of her collection of costumes and associated artefacts, though at the same time the sight of the brown parched hills in the surrounding landscape lay testament to the prolonged heat-wave.

The concert arranged to take place in the St. James' school hall in October was very well-supported and the packed audience all enjoyed the programme of singing by the Cannock Orpheus male-voice choir. Grateful thanks to all members and visitors who supported the occasion.

Longdon WI's 97th anniversary in January was celebrated in the WI hall this year, where all enjoyed the social evening and delicious food.

Members have also attended Staffordshire Federation WI events at the showground and two local WI Group meetings held locally in the Spring and Autumn.

It is pleasing that the hall is being used regularly through the year, being functional and in the heart of the village community it makes good sense.

With all the wider-scale changes rapidly taking place, it is of some comfort that this organisation still has relevance and continues to attract new members, who are always welcomed.

Minna Andrews.

#### **MEETINGS**

Longdon WI Hall, Brook End  
FIRST Wednesday of the month  
At 7.30pm

Membership £42.00 per year pro rata  
Meeting £1.50 inc. refreshments

For more details contact our President 01543 674354



## LONGDON PAROCHIAL CHARITIES TRUST

Registered Charity 220316

Applications are invited from residents of Longdon or Gentleshaw who are experiencing financial hardship. For example;

- \* Villagers lacking essential household items such as white goods, furniture or carpets.
- \* Assistance with utility bills

We are also able to assist with grants to parents of 6<sup>th</sup> form students to help towards the cost of home-to-school travel and grants to students on university courses or similar, regardless of financial status.

Grant application forms are available from St James Church, Longdon and from Gentleshaw Church

Or contact Mrs Allen, Clerk to Trustees on 07789 064 956 or [bellsunlimited@hotmail.com](mailto:bellsunlimited@hotmail.com)

Or apply in writing giving brief details to;  
The Chairman, Parochial Charities,  
18 Church Way, Longdon, Rugeley, Staffs. WS15 4PG

ALL APPLICATIONS WILL BE TREATED IN STRICT CONFIDENCE



Established 2008 Family Business  
Serving Longdon and Gentleshaw and surrounding areas

We cover all aspects of garden maintenance including  
Hedge trimming, treework, garden maintenance and green waste removal  
Also landscaping including turfing, fencing, slabbing, decking and planting

**Fully Insured**

Please call for a no obligation quote **Stansbie Garden Services**  
Home number: 01543 899040                      mobile: 07502 030 592

# 2019 Village Diary and Planner

Please send event details to Val [valpassey@yahoo.com](mailto:valpassey@yahoo.com) for inclusion for the winter edition

Day	Date	Event	Venue /time	Contact/Organisation
	<b>April</b>			
Sat	27			
	<b>May</b>			
Wed	1	<b>WI 'Staffordshire Gems'</b>	W.I Hall 7.30	Minna 01543674354
Sat	4	<b>GROUND FORCE 9.30– 12.00</b>	St James Churchyard	Graham 07788207510
Wed	8	<b>COFFEE MORNING 10.30</b>	27 Upper Way	St James Church
Thur	9	<b>Flower Demonstration</b> with Diana Gudgeon and Afternoon Tea	St James Church 2.30pm	Val Shand 492662
Sat	11			
Fri	17	Friday GROUND FORCE 9.30am	St James Churchyard	Graham 07788207510
Sat	18	<b>Plant Sale and refreshments</b>	VILLAGE HALL 2pm	St Giles and St James
Sat	18			
Sat	25			
	<b>June</b>			
Sat	1	<b>GROUND FORCE 9.30– 12.00</b>	St James Churchyard	Graham 07788207510
Wed	5	<b>Afternoon Tea</b>	30 Upper Way 2.30pm	
Wed	5	<b>WI Christine Blackmore 'African Experience'</b>	W.I Hall 7.30	Minna 01543674354
Sat	8			
Sat	15			
Sun	16	Fathers Day. Family Service 11.am	St James	
Fri	21	Friday GROUND FORCE 9.30am	St James Churchyard	Graham 07788207510
Sat	22			
Sun	23	<b>First service following the Ordination of Rev Emma Cooksey followed by Bring and Share lunch</b>	St James Church 11.00am	Jan Waterfield
Sat	29			
	<b>July</b>			
Wed	3	<b>COFFEE MORNING 10.30</b>	22, Church Way	St James Church
Wed	3	<b>WI Mr John Shand 'My life as a Judge'</b>	W.I Hall 7.30	Minna 01543674354
Sat	6	<b>GROUND FORCE 9.30– 12.00</b>	St James Churchyard	Graham 07788207510
Sat	13			
Fri	20	Friday GROUND FORCE 9.30am	St James Churchyard	Graham 07788207510
Sat	21			
Sat	28			
	<b>Aug</b>			
Sat	3	<b>GROUND FORCE 9.30– 12.00</b>	St James Churchyard	Graham 07788207510
Wed	7	<b>COFFEE MORNING 10.30</b>	1, Old Barn Mews,	
Wed	7	<b>W.I. Garden Meeting</b>	tbc	Minna 01543674354
Sat	10			
Tue	13	<b>OVER 60'S</b>	W.I Hall	Sue 250122
Fri	16	<b>Friday GROUND FORCE</b>	St James Churchyard	Graham 07788207510
Sat	17			
Sat	24			
Sat	31			

	Date	Event	Venue /time	Contact/Organisation
	<b>Sept</b>			
Wed	4	W.I. 'My life as a prison officer' Jenny Adam	W.I Hall 7.30	Minna 01543674354
Sat	7	GROUND FORCE 9.30– 12.00	St James Churchyard	Graham 07788207510
Sat	7	History Exhibition	St James Church	Val Shand 492662
Sun	8	<b>LONGDON SHOW</b>	Village Hall	
Mon	9	<b>Stretch and Relax re-starts 10.30</b> <b>Yoga restarts 7.15</b>	Village hall	Val 07737272085
Tue	10	OVER 60'S		<a href="#">Sue 250122</a>
Wed	11	<b>COFFEE MORNING 10.30</b>	Park Cottage, Church Hill	
Sat	14			
Sat	21			
Sat	28			
Sat	28			
	<b>Oct</b>			
Wed	2	W.I. 'Face Whisperer' Adrienne Carter	W.I Hall 7.30	Minna 01543674354
Sat	5	GROUND FORCE 9.30– 12.00	St James Churchyard	Graham 07788207510
Tue	8	OVER 60'S	W.I Hall	Sue 250122
Wed	9	<b>COFFEE MORNING</b>	'Cob Hawthorn' Borough Lane	
Sat	12			
Sun	13	<b>Harvest Festival 11.00am</b>	St James Church	
Fri	18	<b>Harvest Supper</b>	Village Hall 7.30pm	Val Shand 492662
Sat	19			
Sat	26			
	<b>Nov</b>			
Sat	2	GROUND FORCE 9.30– 12.00	St James Churchyard	Graham 07788207510
Wed	6	W.I Jill Grainger 'Puppy Walker for guide dogs	W.I Hall 7.30	Minna 01543674354
Sat	9			
Sun	10	<b>Remembrance Sunday Service</b>	10.30am St James Church	
Tues	12	OVER 60'S	W.I Hall	Sue 250122
Sat	16			
Sat	23			
Sat	30			
	<b>Dec</b>			
Sun	1	St Giles Christmas Fayre	Village hall 2pm	
Wed	4	<b>W.I. Crafts with Kathy</b>	W.I Hall 7.30	Minna 01543674354
Sat	7			
Sun	8	Brownies at St James 1pm		
Sat	14	OVER 60 's Christmas Party	School	Sue 250122
Sat	21			
Sat	28			

## Longdon Pre-School

Registered Charity Number 1036072

Village Hall, Brook End, Longdon, Rugeley, Staffordshire WS15 4PN

Open 9:15 am – 12:15 pm Tuesday to Friday during term time.

Funding is available for 2 year olds (subject to criteria) and for 3-5 year olds from the start of the term following the child's third birthday.

Longdon Pre-School is a place where children aged 2-5 years can learn through play and gain readiness for starting school. This year, after 20 years at the Pre-School, Christine Wilson, Manager, has taken the decision to retire. On behalf of all children, staff, parents and families that Christine has supported over the years we would like to thank her for her valued contribution and wish her a very happy retirement.

We are currently in the process of recruiting a new Manager, but in the meantime, Emma Norton is our Interim Manager.

At the end of 2018 following an Ofsted inspection the Pre-School was also awarded a rating of 'Good' which we are very proud of.

### **Some of the feedback from the OFSTED findings included:**

"Staff offer a range of stimulating learning opportunities that keep children motivated and deeply involved in their play. They provide children with plenty of exploratory experiences that encourage a multi-sensory approach to learning."

"Staff build strong relationships with children. For example, they offer reassurance, encouraging smiles and praise as they play alongside the children. This helps children to feel relaxed and safe, and to engage in new experiences."

"All children make good progress from their starting points and develop the skills they need in readiness for school."

We would like to thank the organisations and individuals who have supported us in revitalising our outdoor play area which the children are now enjoying in the spring sunshine. Thanks also to our Committee who are working together with the wider community to support the best kept village competition and have spent time planting the raised beds and planters. This also provides an excellent learning opportunity for the children to water and care for the plants whilst at Pre-School.



We are always on the look out for new fundraising opportunities and would welcome working with the local community where possible, so please do get in touch if you have any ideas.

We still have some places available for the summer term and we are also now enrolling for September 2019 too, so please contact **Emma Norton on 07857 207825 for further information.**



**MONDAY**  
**CURRY NIGHT**  
**2 FOR £12**  
INC RICE, NAAN & POPPADUMS  
**SERVED**  
**6PM - 9PM**



**THURSDAY**  
**GRILL NIGHT**  
**£27.95 FOR**  
**2 PEOPLE**  
INC A GLASS OF WINE OR HOUSE PINT  
**SERVED**  
**6PM - 9PM**

**LUNCH**  
**SET COURSE**  
**MENU**  
2 COURSE  
£10.50  
3 COURSE  
£12.95  
**MON - SAT**  
**12-4PM**

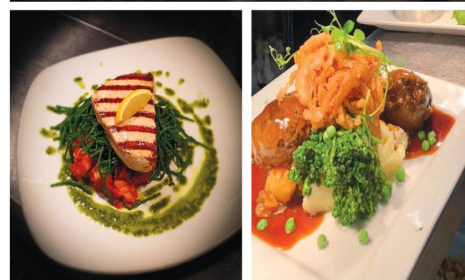
**SWAN WITH**  
**TWO NECKS**



40 BROOK END  
LONGDON  
WS15 4PN

**SUNDAY**  
**LUNCH**  
**MAIN**  
£10.95  
2 COURSES  
£15.95  
3 COURSES  
£19.95  
**12-7PM**

**TUESDAY**  
**PIE &**  
**VEGETARIAN**  
**NIGHT**  
**SERVED**  
**6PM - 9PM**



**FISH FRIDAY**  
**SPECIAL FISH**  
**MENU EVERY**  
**FRIDAY**  
**SERVED**  
**6PM - 9PM**

**DROP IN OR CALL TO BOOK YOUR TABLE**

**01543 491 570**

EMAIL: [reservations@swanwithtwoneckslongdon.com](mailto:reservations@swanwithtwoneckslongdon.com)  
[WWW.SWANWITHTWONECKSLONGDON.COM](http://WWW.SWANWITHTWONECKSLONGDON.COM)



## Longdon Over 60's Club

Longdon Over 60's Club had a busy year in 2018. As well as the usual annual events we had several visits to places of interest. Our birthday party in April was held at Masson Mills in Matlock.

In July a coach trip was organised to Wildgoose Nurseries and tea room which is an RHS gold medal winning nursery, formed in 2011 as growers of hardy perennial and scented Violas. A truly lovely nursery. We then went on to Ludlow for the afternoon.

September saw the Club taking a horse drawn boat trip in Llangollen.

All trips proved popular with our members and days out were memorable events.

A strawberry tea was held at Lavanto which, as always, was a very enjoyable afternoon.

Talks were given by Ken Knowles, Lichfield Town Crier, Anne Fullwood an ex-police officer, Glenys Gayton, Artisan Baker and Jonathan Oates talking about David Garrick, Samuel Johnson and King George.

The Christmas Party was held at the Club. There was a good turnout and an enjoyable afternoon was had by one and all.

Club Meetings are held on the second Tuesday of each month at 2.30 p.m. Meetings are held at Longdon Club. An interesting and varied programme has been organised for 2019.

Activities involve guest speakers, beetle drive, quiz and outings to various places of interest. Refreshments are provided at monthly meetings and a Christmas Party is held in December for all residents over the age of 60. (See programme of events for 2019 below).

**Membership fee is £10 per person, all parish residents over 60 are eligible to join.**

For more information please contact:

Sue Carter (Chair) 07779 789590 Martin Sandground (Vice Chair) 01543 490123

Irene Kemp (Secretary) 01543 490135

### PROGRAMME 2019

14	May	Garden Talk—Graham and Judy White
11	June	Afternoon Tea ~ Levanto
09	July	Outing to Cotswolds
13	August	Arboretum Talk
10	September	Nottingham Princess River Cruise
08	October	tba
12	November	Henry & Audrey Clamp—Experiences of a Doctor & a Doctor's Wife in the 1950's / 60's
10	December	Christmas Party



*Sue*

*Qualified*  
**Mobile  
Hairstylist**

Longdon Resident

01543 491514

07729 683 646



**Longdon Village Hall-  
Summer Term Dates for  
both classes**

April 29th

May 13th, May 20th

June 17th, June 24th

July 1st, July, 8th

**S T R E T C H  
AND RELAX CLASS**

**Mondays 10.30 – 11.30 am**

Start your week with an hour of  
movement, stretching, breathing and  
relaxation.

The class is for all abilities. No floor  
work. Followed by a cuppa  
*£5 weekly or £4 for block booking*

**Dru Yoga**

**Mondays 7.15 -8.30pm**

Yoga and relaxation for all ages and  
abilities. *£7 weekly or £5.50 for  
block booking.*

*Please contact for further info or drop  
in*

**07737272085**

***valpassey@yahoo.com***

**Rose & Teal**

**Really Great Decorators**



**Longdon, Rugeley, Staffs.  
Brian & Maxine Craddock**

**Experienced Interior and exterior  
painting and decorating specialists**

**Call 07592 541396 or  
01543 492835**

**[maxine@roseandteal.co.uk](mailto:maxine@roseandteal.co.uk)**

**JUST FOR FUN** – Time yourself saying  
the alphabet forwards, then backwards  
then practice to improve the slowest time  
– this helps when you just cannot get to  
sleep!



## The Longdon Show

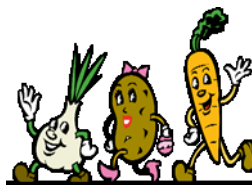
The Longdon Show is an annual event held at the Village Hall on the second Sunday of September. It showcases the gardening, baking and artistic talents of the local population and is free to view.

A small fee is charged for the exhibitors but it is a non-profit making event put on by a small committee of villagers for the enjoyment of all the locals and visitors.

Each year the Longdon Show provides the opportunity for the inhabitants of each of the Longdon villages and their families to enter their exhibits in the categories of Vegetables, Floral Art, Pot Plants, Baking, Photography and Card Making with Junior categories that range from Monster Veg to Miniature Gardens. There are many trophies and prizes to be won and refreshments are made available in the W.I. Hall.

Maggie Derry (Secretary)

The Longdon Show committee comprises: -  
Show Secretary – Martin Sandground,  
Chairperson – Pat Clee,  
Treasurer – Carolyn Carter,  
Secretary – Maggie Derry  
and Carol Felton, Liz Shanahan and Irene Kemp.



Prepare For the



**Longdon Show**  
**Sunday 8<sup>th</sup> September 2019 In the Village Hall**

**Put the date on your calendar – all welcome!**  
**Be part of a great village tradition.**

Spring is with us, so now is the time for planning your  
vegetables, flowers, pot plants, and preserves  
ready to show in September.  
Also practise those baking and crafting skills!

Photography Classes will be: -



Adults – Gardens  
Juniors – Flowers  
Monochrome – Water



**Further details from Martin Sandground - 490123**



## Greenhills Nursery

Commonside, Gentleshaw,  
Nr. Rugeley, WS15 4NG  
[www.greenhillsnursery.co.uk](http://www.greenhillsnursery.co.uk)  
07754 867 643

A family run business since 1994 by Peter Cartwright and Helen Leigh. Peter has over 40 years' experience in the horticultural trade.



Shrubs, perennial, seasonal bedding plants, basket plants, hanging baskets, holly wreaths, Humax Original & Multi-purpose compost, Sylva Grow peat free compost, grow bags, composted fine bark. Wild bird food which is available all year round.

Hanging baskets, new baskets and refills. Find us on Facebook for up to date opening hours, special offers and information.



# MARINA MARINA

design



*marina Heywood*  
designer

Dressmaker

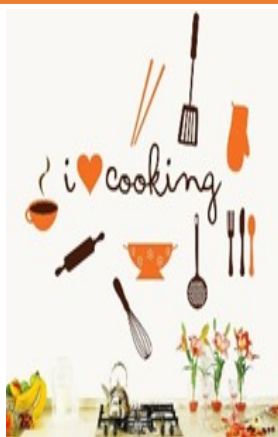
Tailoring alterations

Wedding dress alterations

Restyling or Remodelling

Soft furnishing

9 Church Way, Longdon WS15 4PG  
phone 01543 493488 or 07788274850  
[www.marinamarina.co.uk](http://www.marinamarina.co.uk)



**Angela, our cooking correspondent, has sent in this recipe for you to try.....**

### **Trench Cake**

180 degrees (160 Fan oven), 8 Inch Round Tin or 7 Inch Square

225g Plain Flour, 120g Margarine,  
Quarter Pint Milk, 90g Brown Sugar  
90g Currants or Raisins, 2 Teaspoons Cocoa  
Half Teaspoon Bi Carb.  
Half Teaspoon Nutmeg, half Teaspoon Ginger,  
1 Tablespoon Lemon Rind, 1 Teaspoon Vinegar

Rub margarine into the flour.

Add the other dry ingredients **but not the bi carb.**

Mix milk, vinegar and bi carb together, add to the dry ingredients and mix.

Cook for 1 hr 15 minutes until the skewer comes out clean. Slice, share and enjoy.

*(So called as it is said it was given to the soldiers in the trenches during WW1 We think it can be enjoyed anywhere though, so you don't have to necessarily dig a trench.....editor)*

## Longdon Flower Club

2018 was a great year for the Flower Club.



The Open Gardens weekend event took place in June and as part of this the Club created a flower arrangement in the Church. We also decorated the bridge on the corner of Mill Way and Brook End. The Club met early on Sunday to create the arrangements. We had great fun creating three large arrangements on the bridge. Flowers were kindly provided by Hannah from Ivisons Florist. It was a lovely afternoon and we were so fortunate that the sun was shining down on us. A good time was had by one and all.

Another event June was a visit to The Pintles in Great Bridgeford. A lovely garden with various plants and vegetables and many succulent plants.

The Produce Show was held in September and several members entered the floral art section with very favourable results.

In November we held our annual Christmas Demonstration in the school hall entitled 'Sparkling Christmas'. Our resident demonstrator Hannah created a mix of traditional and new inspirational Christmas arrangements which were raffled off at the end of the day.

We held a Christmas Workshop for our December meeting as well as having our wine and nibbles evening. Our Christmas Meal took place in the Swan with Two Neck in January and everyone enjoyed the evening.

A DATE FOR YOUR DIARY - SUNDAY 24 NOVEMBER 2019

CHRISTMAS DEMONSTRATION

with Beverly Artis, National Demonstrator.

£8.00 to include glass of wine and mince pie.

Why not come along and join us? We are a small friendly Club and welcome people of any age or ability. It is open to everyone who wishes to learn the art of flower arranging or simply wishes to meet up with like minded people.



Our resident demonstrator, Hannah from Ivison Florist in Lichfield, inspires us with her new and innovative floral arrangements each month.

No experience is necessary as there is always help at hand for new members and visitors who will be made very welcome. The hardest part of being in the Flower Club is walking through the door for the first time!

**Meetings are held on the third Wednesday of each month at 7.30 p.m. in the WI Hall.**

For more information please contact Irene 490135 or Carol 490888.

Qualified, fully insured and canine first aid trained

# Rocket's Dog Grooming

We provide attentive & completely personalized grooming with a 1-2-1 professional service in our home based Longdon Salon

- Free pick up/drop off in Longdon (we charge a small fee for surrounding villages)
- Early morning, late evening and weekend appointments available too
- Pre-groom walks (first 2 free)
- Bath, blow-dry & brush from £12
- Full groom from £25
- De-shedding
- Handstripping
- Cuddles with all dogs are compulsory!

Ask about our  
Loyalty  
discount  
offers

Call Nic with no obligation to discuss your requirements  
07809 836734

Rocketsdoggrooming@icloud.com  
12 Hawcroft, Longdon, Rugeley WS15 4QT



## **MOBILE LIBRARY**

**DATES**  
**2019/2020**

At Longdon Brook End  
9.30 to 9.45

24 May

17 June

21 June

5 July

19 July

2 August

16 August

30 August

23 September

27 September

For further information see  
Staffs County Council web  
site.  
[Staffordshire.gov.uk](http://Staffordshire.gov.uk)

## **DC Heating &** **PLUMBING SOLUTIONS**

Oil and Solid Fuel Heating Engineer

Call Dan on 07964 781 781

Email [dcheatingandplumbingsolutions@hotmail.co.uk](mailto:dcheatingandplumbingsolutions@hotmail.co.uk)

Working to ensure boilers and their systems operate to their maximum efficiency





### **LONGDON FRIENDS OF ST. GILES HOSPICE**

Last year's fundraising was another good year, in total £4,290.80 was forwarded to the hospice bringing the total raised since the friends were formed some thirty plus years ago to £276,222.92.

The management of "Must" restaurant held an Indian banquet. Raffles were held at the Vine Inn, Rugeley. These events were very successful, as was the bucket collection at Asda, we were also given some memorial donations. The Christmas fair raised a fabulous £1,975.00.

**2019** A bucket collection was held at Tesco, Lichfield on 3<sup>rd</sup> April and the amount of £282.20 was raised, my thanks to all of the volunteers who helped on that day.

On 4<sup>th</sup> April a "Spring Eggstravaganza" was held at the home of Angela & Henry Tomlinson at Cleat Hill Farm and raised the absolutely superb amount of £800.33. Jill & Steve Warwood once again hosted an "Easter Extravangza" at their home in Stockings Lane on 13<sup>th</sup> April. At the date of going to press we are not as yet able to confirm the amount raised. Many thanks to Mr. and Mrs. Tomlinson and Mr. & Mrs. Warwood for their hard work and generosity.

**The Christmas Fair will be held on Sunday, 1st December 2019 in the village hall.**

If you are able to attend this event, please do so as it is always enjoyable.

Further details will be placed on the village notice boards nearer the time.

Volunteers, helpers & raffle prizes for events would be most appreciated. Please support us in whatever you can to enable St. Giles hospice to care for our local community needs.

G. Crowe, Chair

01543 491760

[gcoaklodge@gmail.com](mailto:gcoaklodge@gmail.com)

**If you would like to join as a friend, the yearly subscription is £2.50 per single person and £5.00 per family. Please contact me if you are interested.**

### **Diary Dates for Council Meetings**

Tuesday May 14<sup>th</sup> 7pm WI Hall, Longdon

Tuesday June 11<sup>th</sup> 7pm WI Hall, Longdon

Tuesday 9<sup>th</sup> July 7pm WI Hall, Longdon

No meetings in August

Tuesday 10<sup>th</sup> September 7pm CW&G Village Hall

Members of the Public are welcome to attend these meetings



# LONGDON VILLAGES COMMUNITY GROUP

## **Raising funds to support the community**

As Spring is well and truly upon us, so is another year of providing fun, family events to help raise funds for local Community Groups. 2018 was a busy year for the Longdon Villages' Community Group - we successfully held a family fun quiz with fish & chips evening, a regal red, white & blue picnic for The Royal Wedding, Longdon Villages' Pet Show with a variety of pets & animals. Finally, at the end of the year, we hosted our hugely successful Christmas Pantomime Aladdin and the annual Christmas Carols on The Green with support from Paul & the team at The Red Lion pub.



Thank you to those lovely people that attended our fun events and to many, many people who helped pull the various events together with lots of smiles and a generous sum of money raised to support local Community needs.

2019 is now fully underway and so is our calendar of exciting events we hope to hold for the local Communities enjoyment:

Pet Show	at the Village Club @ 13.00
Summer Fete	
It's a Knockout event!	
Village Quiz	
Longdon Duck Race	at Longdon Village Hall on Sunday 8th September
Skittles with Fish & Chips	
LVCG AGM	
Christmas Pantomime	at St James School Longdon, on Sunday 1st December @ 14.30
Carols on The Green	at Longdon Club on Friday 6th December @ 18.00 for 18.30

Please keep a lookout on the local Village Notice boards for further information and come along to join in our fun events!...

The aim of our group is to bring about more Community cohesion by organizing village events and raising funds to help support local organization's and residents. We meet monthly at one of our three local pubs for a social hour of discussing ideas and planning events. If you feel you could help the group and/or have any ideas for Village events, activities or would like to submit a bid for a Community financial donation, then please contact:

[longdonvcg@gmail.com](mailto:longdonvcg@gmail.com)



Joan Fox 01543 493539



Sharon Bedlow 01543 491932



Wendy Neary 01543 493623

**We would love to hear from you!**

**LVCG Secretary - Sharon Bedlow**



“Your foreign correspondent Richard Meere, has just completed a fact-finding tour of Dudley’s quartier français, He offers the following:

Our wench has been waggin’ school (playing truant); **Notre fille a séché les cours / Notre fille fait école buissonnière** (e.g. she hides in the bushes)

Yow’ve gorra a face as long as Livery Street (You look miserable)  
**Tu as l’air triste.**

Yow’ll ‘ave it dark (hurry up); **Dépêche toi! Avance!**

This ay getting’ the babby a frock and pinny; **Ça ne mène à rien.**

Her’s got a real bob on herself; **Elle se croit au-dessus des autres.**

Ah’m proper poorly; **J’ai la crève** (heavy cold) / **Je me sens pas top »**

“In producing these articles, I am indebted to my niece Juliet Meere, who lives in Paris, and whose command of the English language has been broadened immeasurably”.  
Richard

Note from editor: This special on-location report was not subsidised through the parish precept despite some wonderful and imaginative expenses claims.

**JUST FOR FUN** – Name a novel starting with every letter of your name

**JUST FOR FUN**—memory test.

Read these words then recall them after finishing reading the magazine.

Octopus, penguin, flamingo, parrot, blue bird, ant, worm, wood pecker, king fisher

**JUST FOR FUN**— name a movie star beginning with every letter of your name



## **Longdon Cricket**

## **Club Report**

Another season is about to get under way for Longdon Cricket Club as we celebrate our 120<sup>th</sup> year! We are hoping to continue our good form from last year which saw us win 16 out of our 18 games! Sadly this will be our last season on the Red Lion Ground before we depart for new beginnings at our new ground.

We will be holding a couple of fundraising events throughout the Summer to help fund the new ground so any support would be appreciated. We currently have the following events planned:

**Saturday 27<sup>th</sup> July**

**Our annual village day between the 3 villages always a fun day out!**

**Saturday 3<sup>rd</sup> August**

**‘Hooked on Cricket’ – Fishing Club and Cricket Club fundraiser  
@The Chetwynd Arms.**

We appreciate any support and help that we receive and it will go a long way to securing our future and help finance equipment for our new ground, if you would be interested in supporting the club in other ways please or would like to find out more about how you can help, please do get in contact with us!

We are looking forward to another good season with 22 weekend fixtures planned and 7 mid-week fixtures planned. Hopefully the sun will stay out and we can get our full allotment of fixtures in!

As ever thanks for your continued support and we look forward to seeing you over the summer.

Tom Bonser  
Longdon Cricket Club Captain  
[tlbonser@aol.com](mailto:tlbonser@aol.com) 07852 513608



## **BEST KEPT VILLAGE COMPETITION 2019**

It's that time of year again when as a Parish Council we shall be making 3 separate entries into The Community Foundation for Staffordshire BKV Competition - namely UPPER LONGDON/LONGDON & LONGDON GREEN and GENTLESHAW,

We will be competing against other villages in the Lichfield/Cannock Chase Area.

The Parish Council want to strive along with all Parishioners to not only improve on our credible awards of Third Places achieved in 2018, but to build on the community spirit that already exists in our beautiful Parish and in doing so work together to achieve involvement of residents in improving the aesthetics and desirability of our villages.

A panel of Judges will make an UNANNOUNCED visit to each village ONCE in MAY and ONCE in JUNE and judge certain features namely -

- BKV Awareness and Publicity
- Children's Poster Competition Displays
- Details of local organisations
- Church Surrounds/ Burial Grounds/Seating/Benches
- Community Buildings and their carparks
- Public Houses
- Telephone Boxes/ Bus Shelters/Seating Area and Village Signs and Features
- Large Public Open Spaces/Greens/Playing Fields
- Private Gardens and Verges outside properties/roadways
- General Cleanliness and Community Effort
- Dog Fouling - REMEBER IT IS AN OFFENCE NOT TO PICK UP AFTER YOUR DOG

PLEASE DO ALL YOU CAN TO HELP OUR VILLAGES BE THE BEST and THANK YOU TO ALL RESIDENTS WHO MAINTAIN THE FLOWER TUBS - YOUR EFFORTS ARE MOST APPRECIATED.



**Thanks to Litter Pickers in the Parish - particularly Gladys and Pauline from Upper Longdon who work tirelessly to clean up our Parish**

IF anyone requires any further information or would like to help in any way please contact any of the Parish Councillors

Many Thanks

Cllr Ann FULLWOOD (07772127776)





## Longdon Club & Institute

### Celebrating 100 years of history

Sir Villiers Forster and Lady Forster had the building erected back in 1919. The Longdon Club then took over the building to form Longdon Club & Institute the following year. More history is available on the club web site

To celebrate this 100 year anniversary the club will be hosting a fun day on  
July 6<sup>th</sup> starting 12noon.

Bouncy castle. Local stalls. Children's games.. Tug of War. BBQ and many more activities. **DATE FOR YOUR DIARY 6<sup>TH</sup> JULY 2019.**

Membership for the club continues to grow but new members are always welcome.  
Great value for just £5.

The club is completely run by volunteers so we welcome your help with bar duties, cleaning, decorating etc. Without volunteers the club cannot operate, so please, please come and put your name forward. Contact Jeff Marsh, Alan Rowe or any of the committee members.

On-going events include weekly bingo (Tues). Music night (Wed).  
Quiz nights, first aid demonstrations, live entertainment.

We have Sky Sport Live so always screening football, cricket and other sporting events.  
**Check our facebook page or website for all the latest details.**

The club is also available for private hire for birthdays, weddings, christenings, funerals etc where you can enjoy competitively priced drinks. Large rear car park and space available in our field to the rear of the club for a marquee.

For more information please contact below or why not call in and have a drink.

Secretary Jeff March 01543 244949 Chairman Alan Rowe 01543 492109

Please help our village community by  
supporting events and fundraisers—their  
success depends on our support.

**A Tribute from Mr Robert Beauchamp Udall's Family**

Thank you for the marvellous send off for our father on the 16<sup>th</sup> August 2018 at St James the Great Church, Longdon.

As you all know our father was 100 yrs old. We would like to thank Rev'd Jan Waterfield and the curate Emma Cooksey for a lovely funeral service and would also like to thank the villagers for their support at a very sad time for the family.

There was such a good turn out and also it was great to have the bugle sounded, by Glenys, at the graveside and the standard bearers from the British Legion with the flags from Kinver and Willenhall.

Thank you also to Lynne and Tom Marshall's Funeral Directors for the very organised and professional manner they operated proceedings.

Very many thanks for the warm welcome after the service at the Swan with Two Necks.

The food and service was so good and we had plenty of food for everyone.

God Bless you all  
Mary Pratt and Philip Udall

**Tom Marshall 19th August 1924—19th February 2019**

Grace and family thank you all for the messages of kindness, support and love shown at this sad time.

We are extremely grateful that so many of you could attend the funeral, and it's enormously comforting to know of the huge affection in which he was held by so many.

Donations received in lieu of flowers amounted to £1,250 for the Midlands Air Ambulance and £750 for St. James Church.

Thank you.

## Funeral Directors C.T. and L. Marshall

Independent Funeral Directors  
Established in 1863

Lynn is continuing our family tradition to ensure that you and your family are provided with a dedicated, professional and very caring service at an extremely emotional time.

“When you need someone to turn to and help you carry out the last wishes of your loved one, or to help you to plan the funeral you know they would want, please call me, anytime, day or night,  
*sincerely, Lynn Marshall*”

Available 24 hours a day, 7 days a week

01543 490 381 or  
Or mobile 0789 623 9288

Horse drawn funeral carriage available

Alternative number is 01543 422 524 (George Stacey)

### Telephone ...

POLICE non emergency	101
BT faultline	0800 800 151
<b>GAS emergency</b>	<b>0800 111 999</b>
<b>ELECTRIC power loss dial your suppliers' emergency number</b>	
<b>NATIONAL GRID</b>	<b>0800 111 999</b>
<b>WATER South Staffs</b>	<b>0800 389 10 11</b>
Lichfield District Council	01543 308 000
Staffordshire County Council	0300 111 80 00
Citizens Advice	03444 111 444
<b>AGE UK</b>	<b>0800 169 20 81</b>
<b>SAMARITANS</b>	<b>dial 116 123</b>
<b>ROYAL BRITISH LEGION welfare</b>	<b>0808 802 8080</b>
Hospitals	
Burton Queens	01283 566 333
Lichfield Samuel Johnson	01543 412 900
Stafford	01785 257 731
Cannock	01543 572 757

### St James Church Longdon

Revd Janet Waterfield  
01543 410 751  
[janwaterfield@blueyonder.co.uk](mailto:janwaterfield@blueyonder.co.uk)

Revd Emma Cooksey  
01543 322 741  
[emma.cooksey@sky.com](mailto:emma.cooksey@sky.com)



To \_\_\_\_\_

Love from \_\_\_\_\_

